

## PRODUCT SPECIFICATIONS

### SP-3850: 38 x 50 Center Drain Shower Pan



#### STANDARD FEATURES

- PAN IS UNDER DEVELOPMENT
- Solid one-piece cast marble
- Durable gel coat surface
- Pre-leveled-rests on subfloor
- Extremely sanitary
- Will not mold or mildew
- Easy to install
- Maintenance-free
- Manufactured in the U.S.A.
- Recommended: Shower Pan Protective Covers

#### APPLICATIONS

- Hospitality | Multifamily | Senior Living | Student Housing | Military Housing

#### ITEM NUMBER

- SP-3850-C-SF

#### TECHNICAL SPECIFICATIONS

MODEL Center Drain

PAN SIZE ~38" x ~50"

MATERIAL Cast Marble

FLOOR PATTERN Traditional

FINISH Matte, Textured, Non-Slip

BACKWALL ~50"

SIDE WALLS ~38"

DRAIN LOCATION Center

CENTER OF DRAIN MEASURES 19" from backwall, 25" from side wall

DIMENSIONS NOTE: Finished product dimensions may vary +/- 1/8" from drawings

FRONT CURB 3"

FLANGE 1" on side and backwalls - attached at factory

WEIGHT ~ 205#

STANDARD Mincey Classic™

SLOPE Pan is sloped toward the drain at 2%

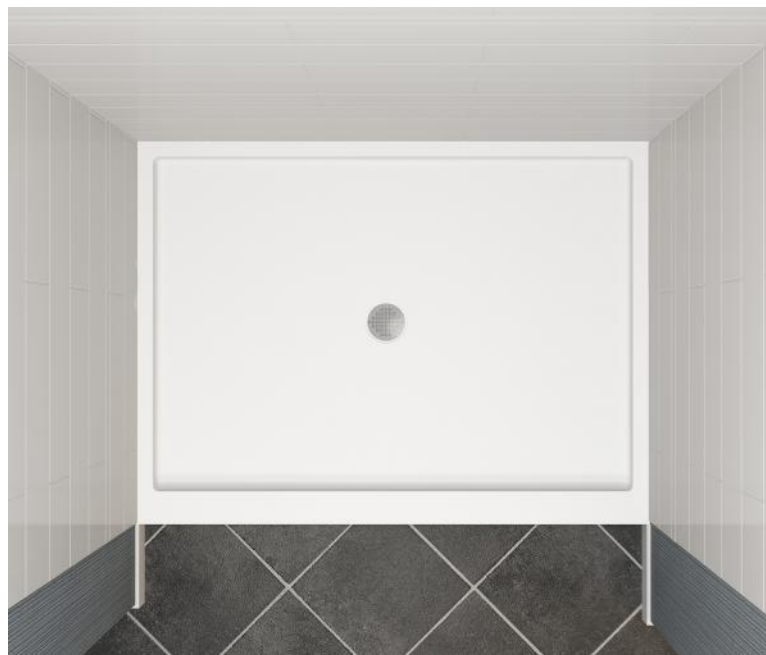
CSI NUMBER 22 42 23

#### COLORS

ALMOND 7800

BONE 7670

CREAM 7400



#### CONTACT OUR SALES STAFF

M-F: 8:00 am - 5:00 pm  
Eastern

**770-532-0451**



#### WE'RE HERE TO HELP

Request a product sample, color  
sample or get a quote.

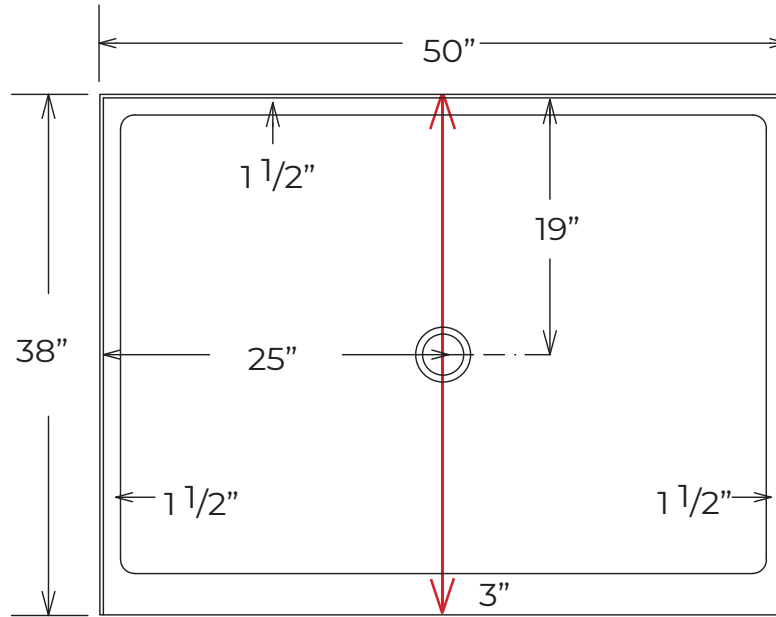
**[sales@minceymarble.com](mailto:sales@minceymarble.com)**  
**[samples@minceymarble.com](mailto:samples@minceymarble.com)**

IVORY	7300
WHITE	2250
LIGHT GRAY	7256
PUTTY	7000

SPECIAL NOTES

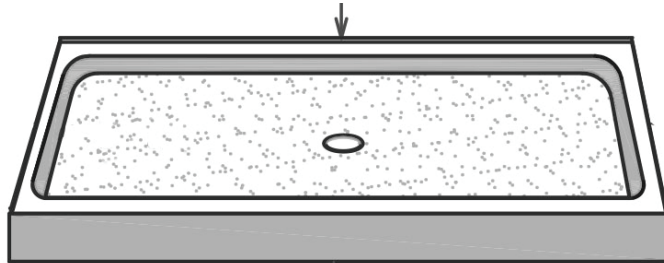
- Standards and Ratings:
- CSA B45-5/IAPMO Z124-2011
- MAS Certified Green. Compliant with ANSI/BIFMA X7.1 Standard
- ANSI A137.1 (average rating of 0.65)
- ANSI/NFSI B101.3 (average rating of 0.66)
- Suggested Drains:
- Sioux Chief Mfg. model: 825-2P – PVC
- Oatey part number: 42045 – PVC
- Oatey part number: 42150 – Brass
- NOTE: Finished product dimensions may vary +/- 1/8" from drawings
- NOTE: Drain is not included with pan

SP-3850-C-SF



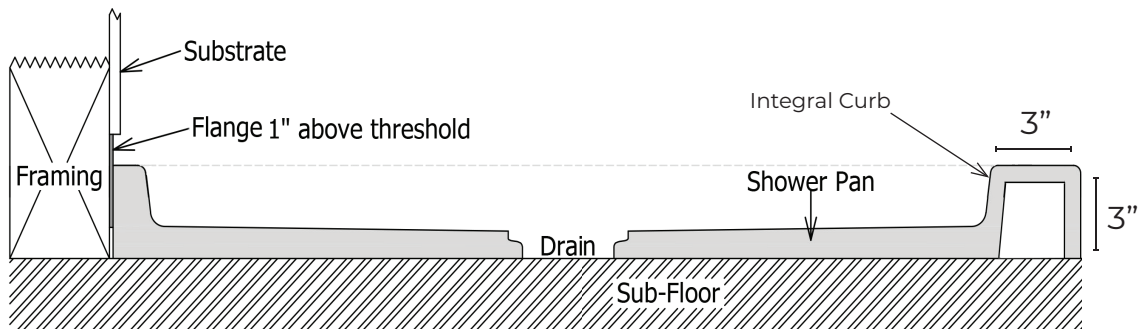
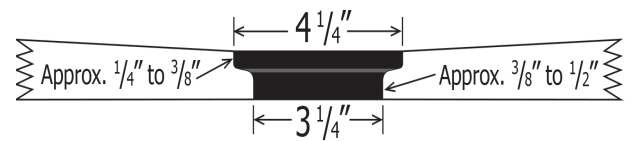
Finished product dimensions may vary by +/- 1/8" from drawings.

1" Flange Attached at Factory Back & Sides



Integral 3" Curb

Drain Detail:



REV: 08.25