

PRODUCT SPECIFICATIONS

TS-VS: 1x12 Vision Shower Wall Panel System



STANDARD FEATURES

- Staggered vertical textured pattern
- Solid one-piece groutless panels
- Permanently sealed surface
- Extremely sanitary
- Will not mold or mildew
- Oversized - measure, cut and fit on jobsite
- Easy to install
- Easy to maintain
- Manufactured in the U.S.A.

APPLICATIONS

- Tub and Shower Surrounds
- Hospitality | Multifamily | Senior Living | Student Housing | Military Housing

ITEM NUMBER

- TS-VS-1x12

TECHNICAL SPECIFICATIONS

MODEL 1 x 12 Vision

PATTERN Staggered vertical textured pattern

MATERIAL Cast Marble

PANEL WIDTHS 32", 38", 62", 10"

HEIGHT Up to 96"

THICKNESS 1/4"

FINISH Textured Matte

CSI NUMBER 06 61 13

COLORS

ALMOND 7800

BONE 7670

CREAM 7400

IVORY 7300

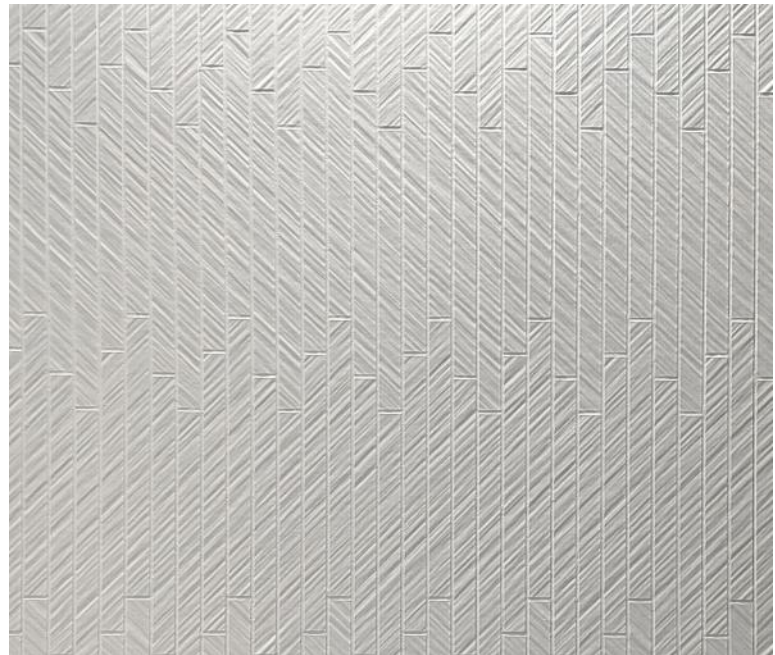
WHITE 2250

LIGHT GRAY 7256

PUTTY 7000

SPECIAL NOTES

- Material: MINCOR™ - Class A fire rated per ASTM e84: Fire and smoke rated material available.
- MAS Certified Green®. Compliant with ANSI/BIFMA X7.1 standard



CONTACT OUR SALES STAFF

M-F: 8:00 am - 5:00 pm
Eastern

770-532-0451

WE'RE HERE TO HELP

Request a product sample, color sample or get a quote.

sales@minceymarble.com
samples@minceymarble.com

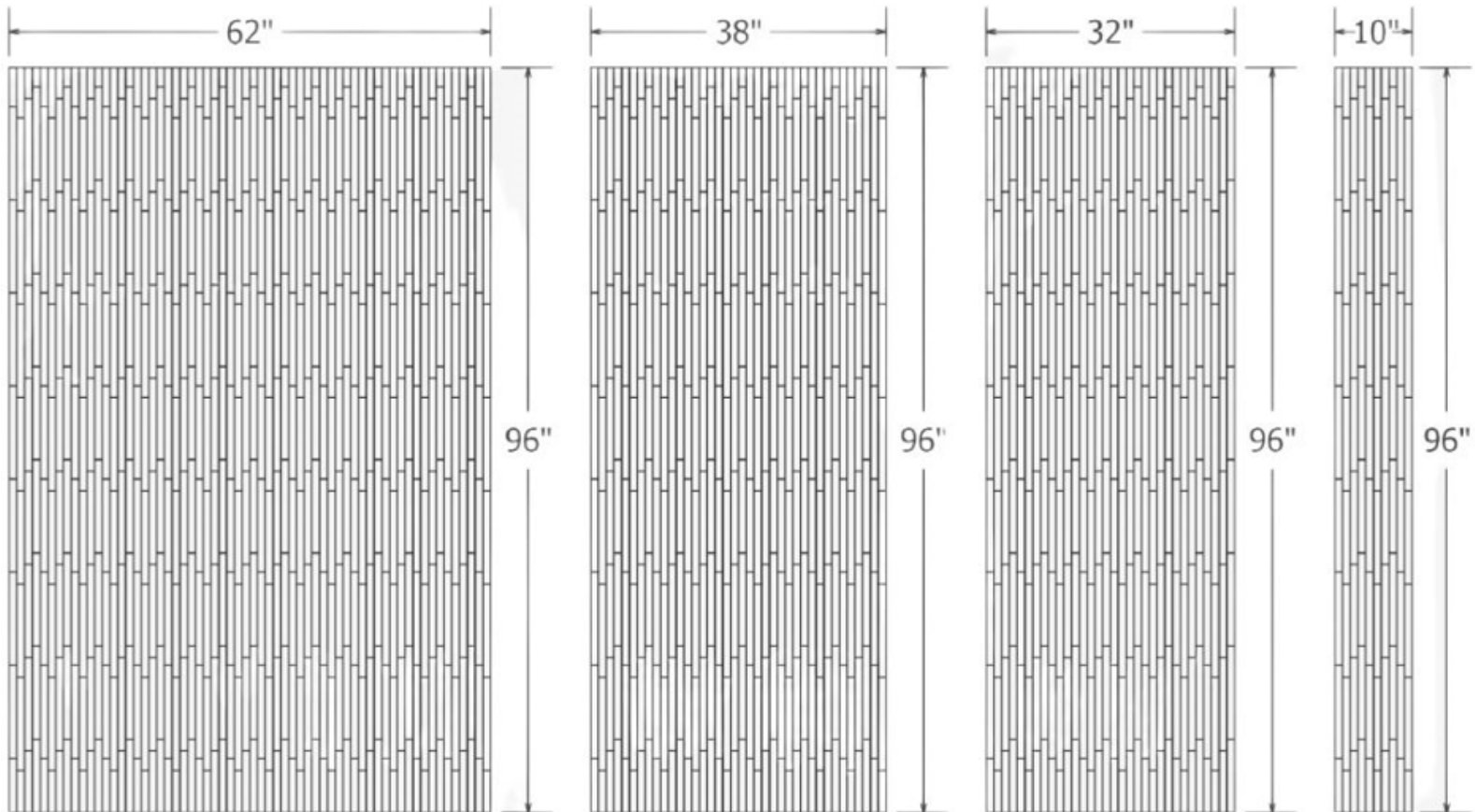
PRODUCT SPECIFICATIONS

TS-VS: 1x12 Vision Shower Wall Panel System



- 100% designed and manufactured at our location in the U.S.A. using locally sourced raw materials where possible.
- Recommend all silicone and caulking to match surround color.

- All panels are made oversized and must be measured and cut to fit on site.
- Uses include, but are not limited to, Tub & Shower Surrounds.
- Accessory and color options are available at www.minceymarble.com.



Revision: 11/2023